

Model 1242 - 2kW Electric Heater c/w Thermostat Control

User instruction for fan heater model:

These instructions should be read carefully and retained for future reference

Important Notes

- These Instructions should be read carefully and retained for the future reference.
- This heater must not be located immediately below a fixed socket outlet.
- Do not use the heater in the immediate surrounds of a bath, a shower, or a swimming pool.
- Do not cover this heater, or obstruct the air inlet or outlet, otherwise there is a risk of overheating.
- The heater must be cooled down completely before any maintenance
- This heater must be fixed against a vertical surface.
- Under no circumstances should the heater be used as a free standing appliance.
- After unpacking, please make sure that the appliance is intact, with no signs of damage caused by transport. If in doubt, do not use the appliance and contact the Service Centre.
- During normal operation this appliance will emit noise from the internal fan unit.
- If the supply cord is damaged, it must be replaced by the manufacturer, its service agent or similarly qualified persons in order to avoid a hazard.
- This appliance is not intended for use by persons (including children) with reduced physical, sensory or mental capabilities, or lack of experience and knowledge, unless they have been given supervision or instruction concerning use of the appliance by a person responsible for their safety. Children should be supervised to ensure that they do not play with the appliance.
- Do not use this appliance as a primary heat source
- Certain carpets can be discoloured by heat. Ensure that furniture, curtains and other combustible materials are positioned no closer than 1m from the front of the fire.
- Do not stand the fire on the carpet – stand on a firm surface, which projects 250 mm (10 inches) beyond the front of the fire and is free of dust and lint.
- If this fire is supplied through an extension cable, please ensure that it is the only appliance plugged into the extension and that the instructions for the extension cable / reel are followed.
- CAUTION: In order to avoid a hazard due to inadvertent resetting of the thermal cut out, this appliance must not be supplied through an external switching device, such as a timer, or connected to a circuit that is regularly switched on and off by the utility.
- This appliance must be positioned so that the plug / fused spur is accessible
- In the event of a fault please disconnect the fire from the mains supply
- Warning: This appliance must be earthed.
- The wires in the mains lead connected to this appliance are coloured in accordance with the following code:

GREEN and YELLOW	Earth
BLUE	Neutral
BROWN	Live

As the colour of the wires in the mains lead of this appliance may not correspond with the coloured markings identifying the terminals in your plug, proceed as follows:

The wire which is coloured Green and Yellow must be connected to the terminal in the plug which is marked with the letter E or by the earth symbol or coloured Green or Green and Yellow.

The wire which is coloured Blue must be connected to the terminal which is marked with the letter N or coloured Black.

The wire which is coloured Brown must be connected to the terminal which is marked with letter L or coloured Red.

Fire Installation

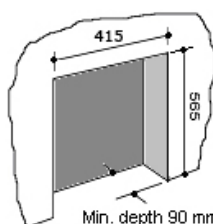
Unpack the heater carefully and retain all packaging for future use. Ensure that all packing items are moved and read any warning labels carefully (see Maintenance Section). This appliance can also be fitted into a suitable opening, which has the cut-out dimensions shown in Figure 1, by removing one or both of the spacing frames from the fire as shown in Figure 1b. When fitted into a back panel the retaining bracket should be fixed to the top of the fire as shown in Figures 2a and 2b. When fixing the appliance against a flat wall the rear spacer frame should be slotted over two No.8 wood screws 25mm long (not supplied) which have been screwed into drilled and plugged holes positioned as in Figure 1a. If the cable is to be routed sideways ensure that the protective bushes are moved and re inserted into the exit holes where the cable passes through the metal sides.

If the fire is to be installed into an existing chimney opening it is recommended that the flue or chimney should be swept before installation and flue sealed off with non-combustible non-fibrous insulation materials to prevent chimney debris from falling onto the fire and cold air from entering. Do not install into an existing fireplace that is prone to dampness. It is recommended to cap and seal the top of the chimney flue to prevent rain from entering. To prevent personal injury you should hire a professional to cap and seal the chimney flue.

The appliance must be positioned so that plug is accessible. Only when you are certain that you have completed the installation should you plug in and switch on the wall socket.

Recess/Surround Cut out Dimensions

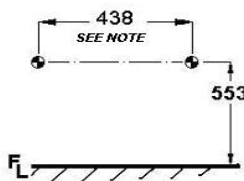
Fig.1



Min. depth 90 mm (No spacers fitted)
45mm (1 Spacer fitted).
Flat wall fix (Both spacers fitted)

Hole positions to fit the fire to a Wall/Backpanel.

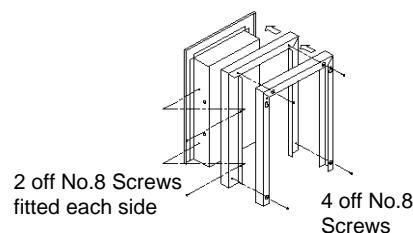
Fig. 1a



NOTE:-
FOR SPACER TRIMS THAT ARE
504mm WIDE X 602mm TALL THIS
DIMENSION SHOULD BE INCREASED
TO 468mm

Removing spacer frames from fire.

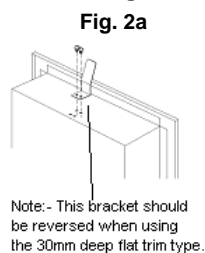
fig. 1b



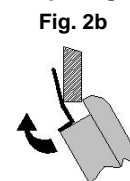
2 off No.8 Screws
fitted each side

4 off No.8
Screws

Fitting Bracket to fire when fitting into an opening or surround



To fit into an opening or surround



Preparation for use

- Check that the supply voltage details on your fuel effect fire are in accordance with your electricity supply. Your fire is fitted with a plug incorporating a 13amp fuse. In the event of replacing the fuse in the plug supplied, a 13amp fuse approved by ASTA to BS 1362 must be used.
- Before switching on, please read the following operation instructions:

Coals/Pebbles:

This fire is supplied fitted with either a Coal or Pebble Fixed Fuel bed. This fuel bed should only be removed by a suitably qualified person.

Thermostat:

The thermostat is mounted at the left-hand side on the bottom face of the heater box and can be used to control the heat output to maintain a constant room temperature to suit user requirements. This will ensure that excessive heat is not produced unnecessarily.

To set the temperature:

The knob is marked with numbers to indicate the maximum and minimum temperature positions. Start with setting 9 and when the room has reached a desired level turn the knob slowly to left until the thermostat 'clicks off'. The thermostat will then maintain the room at the selected level. To increase the temperature, turn knob back to right to a higher setting.

Note: - It is possible that if the room temperature is higher than the thermostat setting it will not come into operation and the heater will remain off until the temperature of the room cools.

Operation

- The switch on the left hand side (marked with a light bulb) controls the lamp.
- The next two switches operate the fan convactor heater. To use the heater the middle of the three switches marked **O/I** (**O** is off, **I** is on) should be operated first for 1 kW of heat. The right hand switch also marked **O/I** should be used together with the middle switch to give 2kW of heat.

Safety thermal cut-out

The appliance is fitted with an Electronic Safety Control (E.S.). This is a safety device, which switches off the fire if, for any reason, the appliance overheats. The E.S. Control can only be re-set after the appliance has cooled down, in order to re-set the E.S. Control proceed as follows:

- Switch off the appliance and leave for approximately 5-10 minutes.
- Switch on appliance and the E.S. Control will re-set.
- Ensure that the appliance is functioning correctly. If the E.S. Control operates again, it is advisable to have the appliance checked out by a competent Electrician.

CAUTION: In order to avoid a hazard due to inadvertent resetting of the thermal cut out, this appliance **must not** be supplied through an external switching device, such as a timer, or connected to a circuit that is regularly switched on and off by the utility.

Please note that this appliance uses a motor to operate the flame effect and that it may be possible to hear it where the background noise is very low. This is normal and should not be a cause of concern.

Maintenance

Warning: Before undertaking any maintenance or cleaning disconnect appliance from main supply. Only competent persons should service / repair appliances.

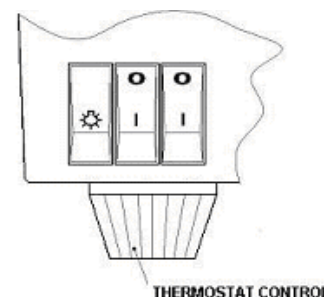
THE AREA AROUND THE FIRE SHOULD BE KEPT FREE OF ANY MATERIALS SUCH AS LINT OR HOUSE DUST (I.E. ANIMAL HAIR/ CARPET FIBRES) THAT COULD BE DRAWN INTO THE INTERNAL WORKINGS OF THE APPLIANCE AND HENCE AFFECT THE PERFORMANCE. WE RECOMMEND THAT YOU CLEAN AROUND THE FAN GRILLE HOUSING AT REGULAR INTERVALS. THIS CAN BE DONE USING STANDARD VACUUM CLEANER AND SUITABLE ATTACHMENT.

Please note if the supply cord on this appliance is damaged it must be replaced by the manufacturer, Authorised Service Agent, or a qualified person to avoid a hazard.

Note: To prevent scratching of the front screen, this appliance should be cleaned with a damp cloth only. Due to the nature of Stainless Steel it picks up finger marks easily, the side trims should always be cleaned with a cleaner that is suitable for stainless steel.

Replacing lamp

- **WARNING: There are no internal user serviceable parts, i.e. bulbs, in this product. Under no circumstance should access be gained to the internal parts other than by a suitably qualified person.**



Fault finding – symptoms and cure.

It is highly unlikely you should have a fault with your heater, but should there appear to be a problem, please refer to the following checklist of our most frequent questions from customers. If these do not answer your query, please contact your retailer, or call us.

No light effect

- Please check – does the heater still work? If YES – it will almost certainly need a new LED Strip or transformer.
WARNING: There are no internal user serviceable parts, i.e. bulbs, in this product. Under no circumstance should access be gained to the internal parts other than by a suitably qualified person.
- If NO – has the heater cut-out operated? To protect against overheating please refer to safety cut-out section above. If still not working, first change the 13amp fuse in the plug with one which you know works. Secondly, check the wall socket by plugging a table lamp, that you know, works on another socket. If this does not work, get the electrician to check the socket.

Static light effect

- New Flame effect motor required
WARNING: There are no internal user serviceable parts, i.e. bulbs, in this product. Under no circumstance should access be gained to the internal parts other than by a suitably qualified person.

No Heater operation – Lights working

- Please consult both the **Thermostat** and the **Electronic safety control** section, if the steps taken therein do not work, the fire will need to be checked over by a suitably qualified person.

Electric Fire Guarantee

Be Modern Ltd. (the 'Company') provides a **twelve month** guarantee in respect of electric fire (the 'Product') ranges.

- The twelve month Guarantee applies to:**
 - All products in the ranges manufactured by the 'Company' (but subject to the exceptions below): where
 - The product has been purchased and installed within the UK and in respect of
 - The initial installation: and in favour of
 - The original purchaser
- Proof of Purchase must be retained by the Purchaser**
- The twelve month Guarantee does not apply to:**
 - Damage or inferior workmanship practices whilst the 'Product' is being installed**
 - Damage caused by mis-use of the 'Product' or where normal standards of care and use have not been complied with.**
 - Damage through a malfunction or an inadequately installed electric fire.**
 - Damage or defects due to mis-use, accident or unauthorised alterations.**
- During the 1 **year** after the "Product" has been supplied, the Guarantee covers the make good (whether by repair or replacement at the Company's option) of defects arising from defective manufacture of materials of "Product" covered in Para 1 all at no cost to the purchaser on the proviso:
 - The Product has been installed as Be Modern recommendations
 - The Purchaser uninstalls the Product and makes it available for collection by Be Modern.

Note: All lamps supplied with the product are classed as consumable items, and are the Purchasers responsibility to replace.

This Guarantee does not affect your statutory rights

On requiring service the purchaser should contact the retailer who supplied your product who will assist and advise you as necessary.



This fire complies with the European Safety Standards (LVD) EN60335-2-30 and the European Electro Magnetic Compatibility (EMC) En55015, EN60555-2 and EN60555-3 which covers the essential requirements of the EEC Directives and 89/336

Waste electrical products should not be disposed of with household waste. Please recycle where facilities exist. Check with your local authority or retailer for recycling advice.



Be Modern Ltd. Customer Services

Tel (0191) 430 0901

Fax (0191) 430 9522